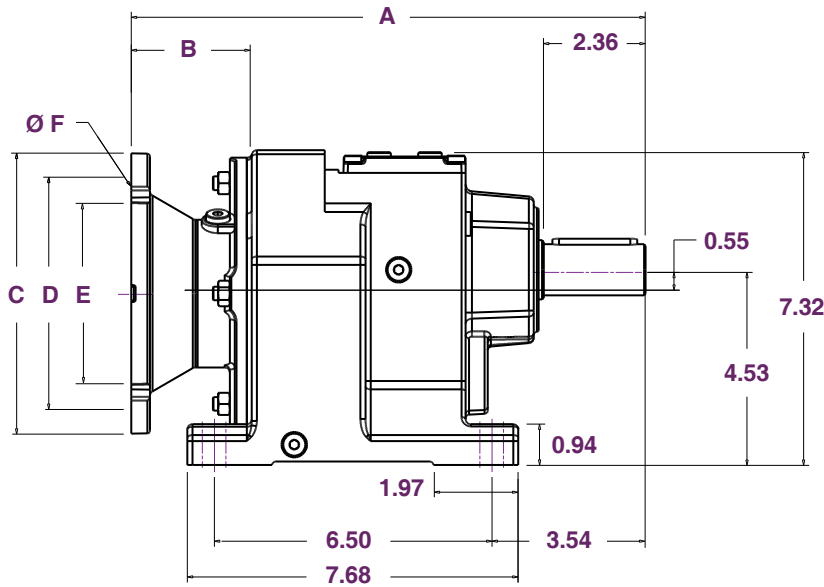


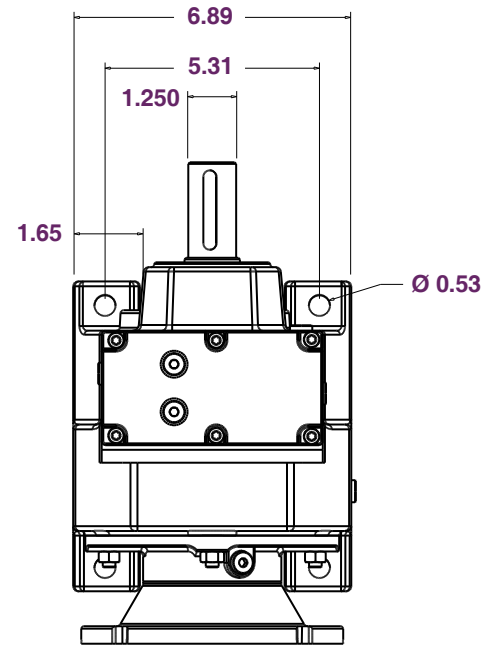


VR48 Dimensions

All dimensions listed in inches



Side



Top

Available Flanges:

Nema Flange Size	A (in)	B (in)	C (in)	D (in)	E (in)	F (in)
56C	11.93	2.68	6.50	5.88	4.500	0.41
140TC	11.81	2.56	6.50	5.88	4.500	0.43
180TC	13.19	3.94	9.00	7.25	8.500	0.59

Motor Options

Nema Frame	Motor Shaft Dia. (in)
56C	0.625
143TC	0.875
145TC	0.875
182TC	1.125
184TC	1.125

Efficiency

Reduction Stages	Efficiency (%)
2	96
3	94

Specifications

Output Key Width (in)	Est. Oil* (oz)	Approx. Dry Reducer Weight* (lbs)
0.250	23.67	28.66

NOTE: *Oil estimation assumes standard mounting position "A". See page 55 for more information on specific oil amounts in various mounting positions.

*Reducer weights are approximate and can vary by several pounds depending on flange and ratio options.

Ø = common engineering symbol for "diameter".

VR48 Specifications

Stock VR48 Specifications:
Input Speed: 1750 RPM

Service Factor: 1.0

Nominal Ratio	Actual Ratio (:1)	Output Speed (RPM)	Input Power (HP)	Output Power (HP)	Output Torque (in-lbs)	Reduction Stages
60	56.73	30.85	1.38	1.30	2,655.2	3
50	47.75	36.65	1.64	1.54	2,655.2	3
40	42.87	40.82	1.83	1.72	2,655.2	3
30	29.88	58.57	2.62	2.47	2,655.2	3
20	19.27	90.81	3.92	3.76	2,611.0	2
15	14.56	120.19	4.66	4.47	2,345.4	2
10	10.15	172.41	5.80	5.57	2,035.7	2
5	4.85	360.82	7.91	7.60	1,327.6	2

Special Order VR48 Specifications:
Input Speed: 1750 RPM

Service Factor: 1.0

Actual Ratio (:1)	Output Speed (RPM)	Input Power (HP)	Output Power (HP)	Output Torque (in-lbs)	Reduction Stages
114.17	15.33	0.69	0.65	2,655.2	3
100.86	17.35	0.78	0.73	2,655.2	3
93.68	18.68	0.84	0.79	2,655.2	3
84.90	20.61	0.92	0.87	2,655.2	3
76.23	22.96	1.03	0.97	2,655.2	3
68.54	25.53	1.14	1.08	2,655.2	3
64.21	27.25	1.22	1.15	2,655.2	3
52.69	33.21	1.49	1.40	2,655.2	3
36.93	47.39	2.12	2.00	2,655.2	3
34.73	50.39	2.26	2.12	2,655.2	3
31.12	55.01	2.41	2.32	2,655.2	2
26.74	65.45	2.87	2.76	2,655.2	2
26.70	65.54	2.93	2.76	2,655.2	3
23.28	75.17	3.30	3.17	2,655.2	2
17.89	97.82	4.15	3.98	2,566.7	2
16.22	107.89	4.34	4.17	2,433.9	2
12.54	139.55	5.10	4.90	2,212.7	2
11.79	148.43	5.32	5.11	2,168.4	2
9.07	192.94	6.21	5.96	1,947.2	2
8.01	218.48	6.55	6.29	1,814.4	2
7.76	225.52	5.37	5.16	1,442.7	2
6.96	251.44	5.85	5.61	1,407.3	2
6.00	291.67	6.65	6.39	1,380.7	2
5.64	310.28	7.03	6.75	1,371.9	2
4.34	403.23	8.61	8.27	1,292.2	2
3.83	456.92	9.62	9.24	1,274.5	2

